



**SERVING FLORIDA'S  
WATER & WASTEWATER INDUSTRY  
SINCE 1987**

Volume 14, Issue 1

April 2025

**DUPERON CORPORATION—Screening Systems**

The world needs more role models.

Make the choice to be one.

**Inside this Issue:**

|   |          |
|---|----------|
| <b>XYLEM/<br/>EVOQUA</b><br>LO/PRO<br>CHEMICAL<br>SCRUBBERS &<br>ZABOCS | <b>2</b> |
| <b>FWEA</b><br>AIR QUALITY<br>SEMINAR                                   | <b>2</b> |
| <b>AMWELL</b><br>CLARIFIERS &<br>TELESCOPING VALVES                     | <b>2</b> |
| <b>HALLSTEN</b><br>ALUMINUM TANK<br>COVERS                              | <b>3</b> |
| <b>DUPERON</b><br>ADDRESSING URBAN<br>STORMWATER<br>SCREENING           | <b>3</b> |
| <b>DUPERON</b><br>STORMWATER<br>HARVEST<br>RAKES                        | <b>4</b> |

The **DUPERON® FlexRake®** is a mechanical barscreen with proven installations in wastewater facilities throughout Florida and the United States. The photo on the right is from the ECR Bypass screening project in West Palm Beach.

The **FlexRake®** is available with typical bar spacing ranging from 1/4" to 4". The unique, heavy duty **FlexLink®** construction eliminates the need for lower sprockets and bearings and is capable of lifting up to 1,000 lbs. Multiple barscreen rakes are provided every 21" for high-volume debris applications. Rakes provide full penetration, efficiently cleaning three sides of the barscreen; i.e., the surface as well as the entire depth of the spacing between both sides of the bars.

The **FlexRake®** is available in 304, 316 and 316 L construction with enclosures for odor control. Enclosures are provided with full service hatches for inspection and O&M access.



The **FlexRake®** is standard with two-speed VFD operation which can be run manually or automatically using feedback from level sensors.

**DUPERON®** Dual Auger compactors are capable of moving debris up to 40 feet away, eliminating the need for conveyors or sluices.

**DUPERON®** also provides a full complement of equipment including conveyors and sluices.

With **DUPERON®**, you will benefit from over 21 years of industry experience, along with a standard **5-Year-Warranty**.

Newly Formed Bison® - a Business of AMETEK - Combines AMETEK Dynamic Fluid Solutions and Bison Gear and Engineering Corp.

ROTRON Regenerative Blowers



Equipment Plus Solutions is your Florida source for factory direct access to the complete line of **BISON/AMETEK (ROTRON)** Regenerative Blowers.

The **ROTRON** brand has been a long standing world leader in regenerative blower technologies providing **chemical process blowers, environmental blowers, industrial blowers, and spa blowers**, as well as a complete line of accessories and replacement motors.

Contact us today with your regenerative blower needs.

## XYLEM + EVOQUA—Odor Control Systems



**Xylem / Evoqua** provides a full range of odor control systems—from biofilters, to carbon adsorption systems, as well as chemical scrubbers.

When it comes to total odor treatment, **Xylem / Evoqua LO/PRO®** scrubber is the proven solution.

**LO/PRO®**s are available with performance ranges covering air flows up to 30,000 cfm.

They are available in 2- and 3-stage designs. Application of these models is dependent

upon the VOCs present in the air flow and the level of treatment desired.

**LO/PRO®** scrubbers provide 99.5% H<sub>2</sub>S & NH<sub>3</sub> destruction and handle H<sub>2</sub>S and organic odors. They are ideal for dewatering and sludge drying odors.

The premier advantage to the operation of a **LO/PRO®** scrubber is the benefit of 50% lower chemical usage.

The **ZABOCs** biofilter is a 2-stage biofilter, providing

biological reduction of H<sub>2</sub>S in stage one with an internal second stage provided to polish off residual reduced organic sulfides using carbon adsorption.

Standard **ZABOCs** models handle air flows ranging from 50 to 5000 cfm. They provide high efficiency odor removal and are compact and low profile. They are perfect for lift station applications and smaller treatment plant applications

## FWEA AIR QUALITY SEMINAR

**THE FWEA AIR QUALITY COMMITTEE** recently held their annual seminar at the City of Tavares, continuing the committee's legacy of providing continued education opportunities related to the odor control field.

This year's workshop was well attended by utility personnel and engineers from throughout the State of Florida.

Technical presentations were provided by a nationally acclaimed group of consultants specializing in the odor

control field. Attendees gained an in-depth understanding of odor control system design issues along with sound engineering practices.

The Annual Seminar is a CEU and PDH continued education opportunity, for those in attendance.

The committee provides seminar scholarships for this event to college-



level engineering students and also "pays it forward" by donating proceeds from this event to the:

**FWEA**  
*Norm Casey Scholarship Fund*



## AMWELL® Clarifiers, Skimmers, and Telescoping Valves

**AMWELL®** (established in 1868) manufactures a full line of circular clarifiers, rectangular clarifiers, sludge thickeners, skimmers and telescoping valves.

If you are looking for a suction style clarifier or a pier-supported solids contact clarifier, **AMWELL®** has your solution.

**AMWELL®** manufactures single or double-sweep scrapers and standard or spiral flights.

A complete line of rectangular chain and flight clarifiers are also available along with manual or gear operated slotted pipe surface skimmers. if you need decanting capability within your sludge digesters to assist in sludge thickening, **AMWELL®** manufactures rack & pinion or non-rising stem telescoping valves.

**AMWELL®** offers circular and rectangular clarifiers gear drives, grit removal systems, scum skimmers

and telescoping valves. With **AMWELL®**, you can count on generations of experience and American-Made products. Let us assist you with finding the right solution for your particular application.



Located in North Aurora, IL  
(Greater Chicago Area)



## HALLSTEN CORPORATION —Aluminum Tank Covers

**HALLSTEN CORPORATION** manufactures custom engineered, flat aluminum cover systems for wastewater treatment plant process tankage.

These tank covers are designed as a walking surface for access by plant personnel.

**HALLSTEN** covers are substantially air tight and are typically installed in conjunction with a centralized odor control system.

After submittals, and prior to fabrication of the cover

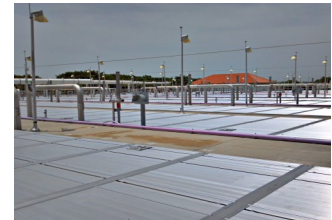
system, **HALLSTEN** survey crews are dispatched from the factory to obtain the actual field dimensions for the covers. These true field dimensions are used when the cover is released to production.

**HALLSTEN CORPORATION** also provides and installs their covers using experienced plant crews to ensure proper installation. The majority of these covers are installed over live process tanks. Post installation,

the cover systems are certified to be in compliance with local Florida hurricane wind load standards.

Because their crews install the cover system, **HALLSTEN CORPORATION** takes responsibility for the integrity of the installation and fit of the cover system on the tankage.

**HALLSTEN CORPORATION** offers extensive experience with references throughout the State of Florida.



## DUPERON® CORPORATION

### Addressing Urban Stormwater Screening

Cities and counties throughout the State of Florida are clearly dealing with urban sprawl.

As this growth occurs, the resulting environmental impact has resulted in more complex stormwater treatment systems.

Many regulated stormwater plans now include treatment areas for nutrient reduction and control using various approaches to address nitrogen and phosphorus levels present within the stormwater.

Designers of these systems have quickly learned

that urban litter and stormwater debris can be a hindrance to the performance and ultimate success of these treatment systems.

Urban stormwater debris is physically smaller and is typically represented by small plastic bags, Styrofoam cups, soda cans, cigarette packs, as well as small leaves and twigs, etc. As a result, the screening requirements for these urban applications are more refined if this debris is to be successfully collected and removed.

The **DUPERON® FlexRake®** is a proven solution for

these stormwater screening applications.

This **DUPERON®** screening system, by design, has the capability of removing large and small debris, and will successfully discharge it into a dumpster where collected debris can then be transported to a landfill.

**DUPERON®** offers sound solutions for these unique applications. By providing design assistance, as well as full hydraulic calculations, **DUPERON®** is able to determine your best screening selection.





Visit us on the web at:  
[www.equipmentplusinc.com](http://www.equipmentplusinc.com)

**Equipment Plus Solutions, Inc.**

P.O. Box 2908  
 Belleview, FL 34421-2908

Ph: 352.237.1869  
 Fax: 877.792.8356

We value your consideration of  
**EQUIPMENT PLUS SOLUTIONS, INC.**  
 and welcome the opportunity to be of service to you.

Please take a moment and visit our web site.  
 You'll find direct links to the companies we represent  
 as well as information and links to our offices.

We stand ready to assist you—we're just a phone call  
 or an email away.

## DUPERON<sup>®</sup> STORMWATER HARVESTRAKE

The **DUPERON<sup>®</sup> HarvestRake<sup>®</sup>** is a highly customized screening system designed for stormwater treatment facilities that use algae to remove nutrients from the water.

The **HarvestRake<sup>®</sup>** (shown in the photo to the right) is currently operational in a 10-MGD Florida stormwater nutrient reduction facility.

This treatment facility utilizes an algal turf scrubber to filter water being fed from a network of stormwater canals.

A thick layer of algae is grown on the surface of a 5-acre flow way within the treatment system to remove nutrients. As the water flows across the algae rich turf scrubber, surface nitrogen and phosphorus are systematically removed. This particular stormwater treatment system removes 13,000 lbs. of nitrogen and 3,000 lbs of phosphorus annually.

The algae on the flow way is periodically removed and the algae is then screened from the treatment system's process water using the **DUPERON<sup>®</sup> HarvestRake<sup>®</sup>**.

The separated algae is then dried and safely disposed of in a local landfill.

**DUPERON<sup>®</sup>** manufactures other screening systems utilized in various treatment applications.

The **FlexRake<sup>®</sup>** is used for municipal and industrial wastewater screening applications.

The **TrashRake<sup>®</sup>** is used for large stormwater debris removal systems.

**Duperon Corporation<sup>®</sup>** is a United States based manufacturing company located in Saginaw, MI.



"Believe you can and you're halfway there" Theodore Roosevelt